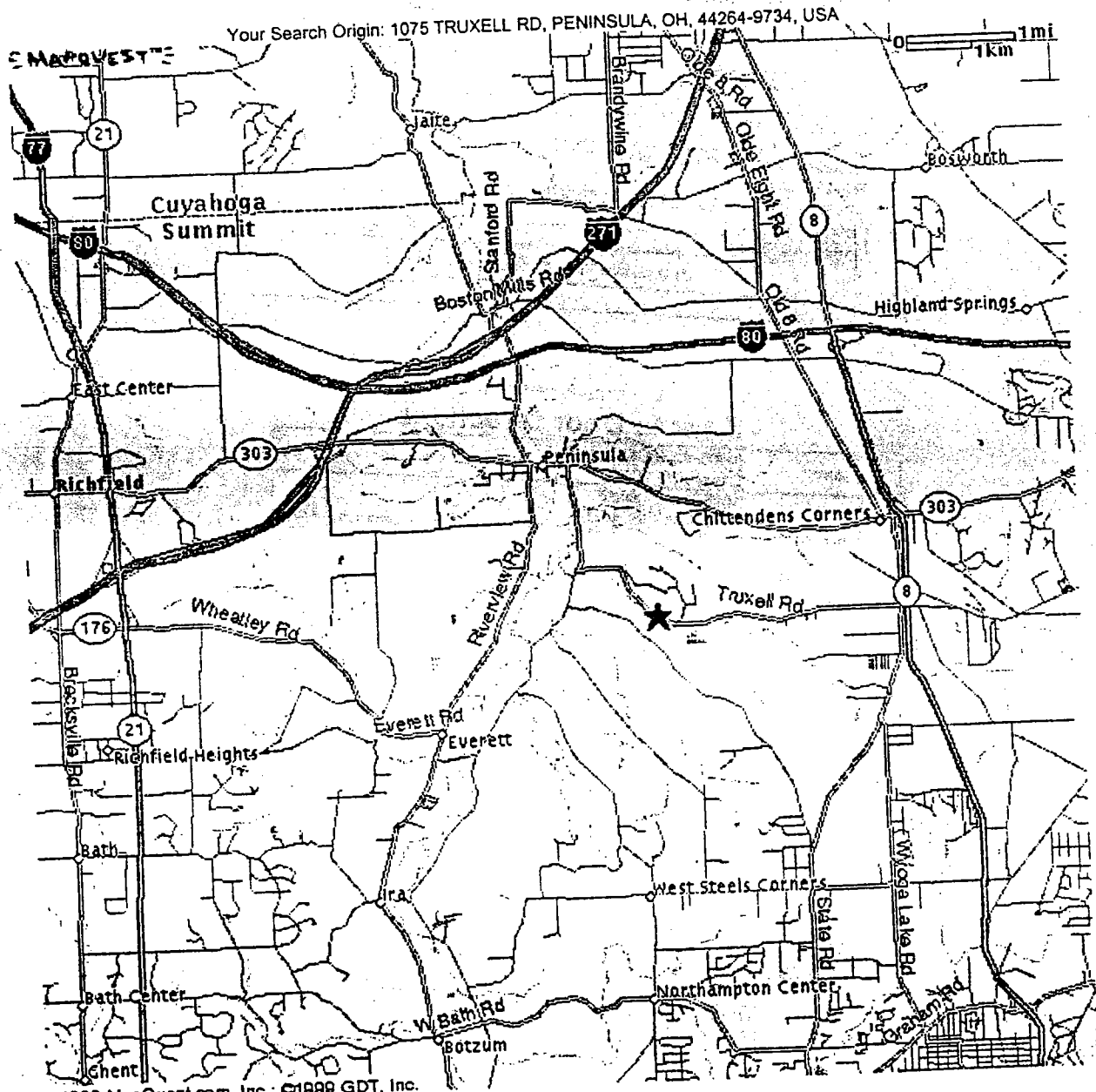


## Directions to Camp Manatoc

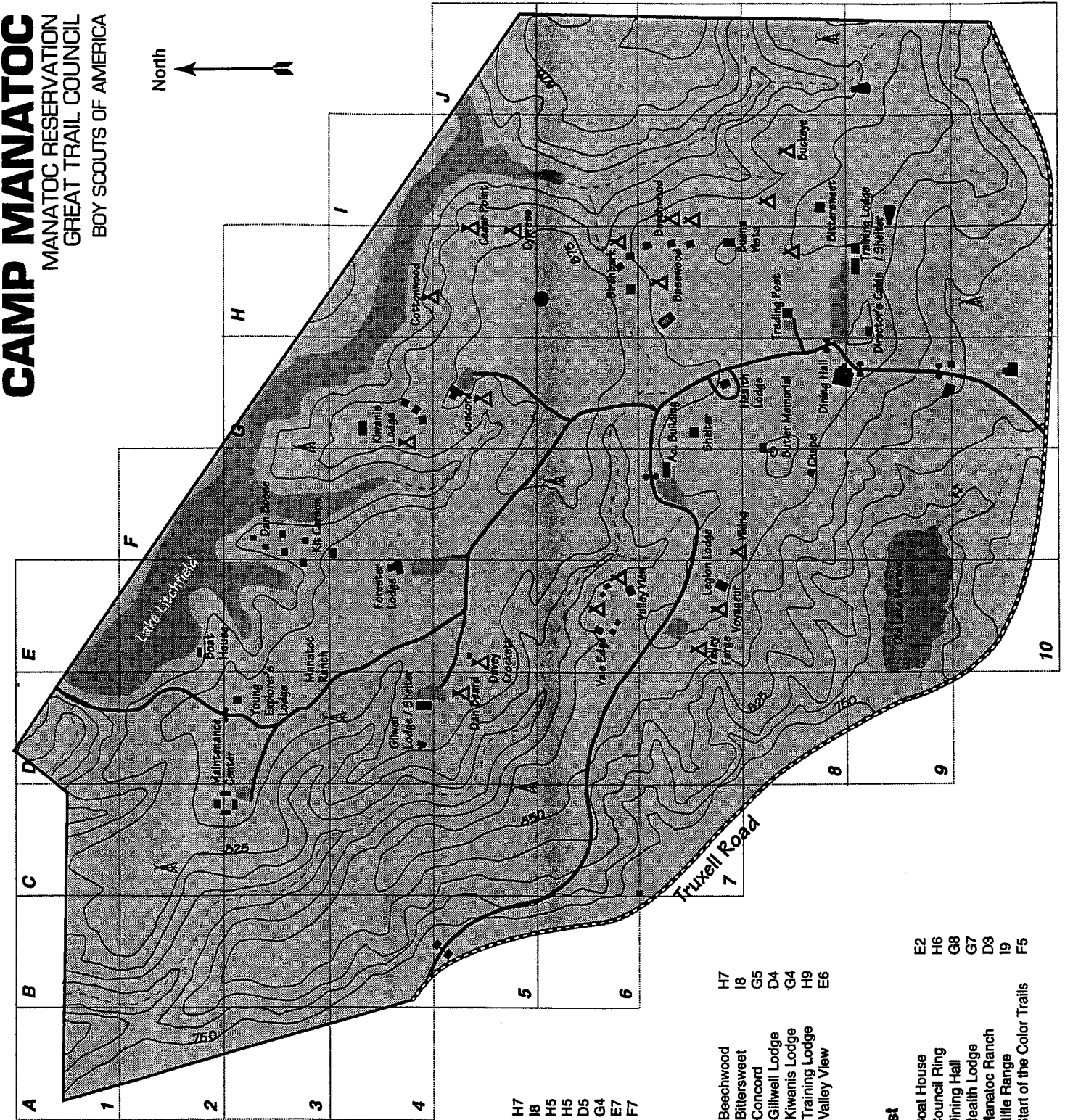
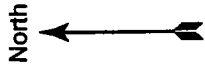
Take the Ohio Turnpike west to exit 180. Take Route 8 south for less than a mile to Route 303 exit. Follow Route 303 west for 3 miles to the traffic light in Peninsula. Turn left (south) on Akron-Peninsula Road toward Blossom Music Center. About 1 mile down on the left as you pass the golf course, turn left onto Truxell road and see the large camp entrance on your left. Approx. driving time is 1 hour.



(...use your browser print option to print)

# CAMP MANATOC

MANATOC RESERVATION  
GREAT TRAIL COUNCIL  
BOY SCOUTS OF AMERICA



**Legend**

- Improved Road
- Unimproved Road
- Building / Pool
- Main Gate
- Traffic Control Gate
- Butler Memorial
- Quarry
- Oil Well
- Rifle Range
- Campsite
- Cairn
- Outpost
- Contour Lines
- Stream
- Lake
- Swamp Land
- Start of the Color Trails
- Council Ring

### Cabins

- |                |    |              |    |
|----------------|----|--------------|----|
| Basswood       | H7 | Beechwood    | H7 |
| Birchbark      | H6 | Buckeye      | I8 |
| Buena Vista    | H7 | Cedar Point  | H5 |
| Concord        | G5 | Cottonwood   | H5 |
| Cypress        | H5 | Dan Beard    | D5 |
| Davey Crockett | E5 | Kiwanis      | G4 |
| Vale Edge      | E6 | Valley Forge | E7 |
| Valley View    | E6 | Viking       | F7 |
| Voyageur       | E7 |              |    |

### Campsites

- |                        |    |                |    |
|------------------------|----|----------------|----|
| Basswood               | H7 | Beechwood      | H7 |
| Birchbark              | H6 | Bittersweet    | I8 |
| Buena Vista            | H7 | Concord        | G5 |
| Dan Boone / Kit Carson | F3 | Gillwell Lodge | D4 |
| Forester Lodge         | E4 | Kiwanis Lodge  | G4 |
| Legion Lodge           | E7 | Training Lodge | H9 |
| Vale Edge              | E6 | Valley View    | E6 |
| Young Explorers Lodge  | D3 |                |    |

### Special Interest

- |                            |    |                           |    |
|----------------------------|----|---------------------------|----|
| Administration Building    | F7 | Boat House                | E2 |
| Butler Memorial            | F8 | Council Ring              | H6 |
| Chapel                     | F8 | Dining Hall               | G8 |
| Director's Cabin           | H9 | Health Lodge              | G7 |
| Maintenance Center         | C2 | Manatoc Ranch             | D3 |
| Pool                       | H7 | Rifle Range               | I9 |
| Shotgun Range              | J9 | Start of the Color Trails | F5 |
| Trading post (summer camp) | H8 |                           |    |
| Trading post (winter)      | F7 |                           |    |

MANATOC SCOUT RESERVATION

- Buildings
- ▣ Adirondacks
- Ⓛ Latrine
- - - Trail
- Cairns
- ▬ Paved Road
- ▬▬ Road
- △ Tent Campsite
- 1 Buckeye
- 2 Buena Vista
- 3 Beechwood
- 4 Basswood
- 5 Birchbark
- 6 Cypress
- 7 Cedar Point
- 8 Cherry Cove
- 9 Cotton Wood
- 10 Concord
- 11 Davey Crockett
- 12 Valley View
- 13 Vale Edge
- 14 Valley Forge
- 15 Voyageur
- 16 Viking

